




LAX Metroplex / Wide Area Ad Hoc Committee

December 2017 / January 2018 Report

1. Data trends for DAHJR & GADDO
 2. New Waypoint Analysis: BAYST, JUUSE & JETSA
 3. Actions Taken Since Last General RT Meeting
 4. Change of Status for SADDE8
 5. Elsewhere in SoCal Metroplex: Newport Beach
- 

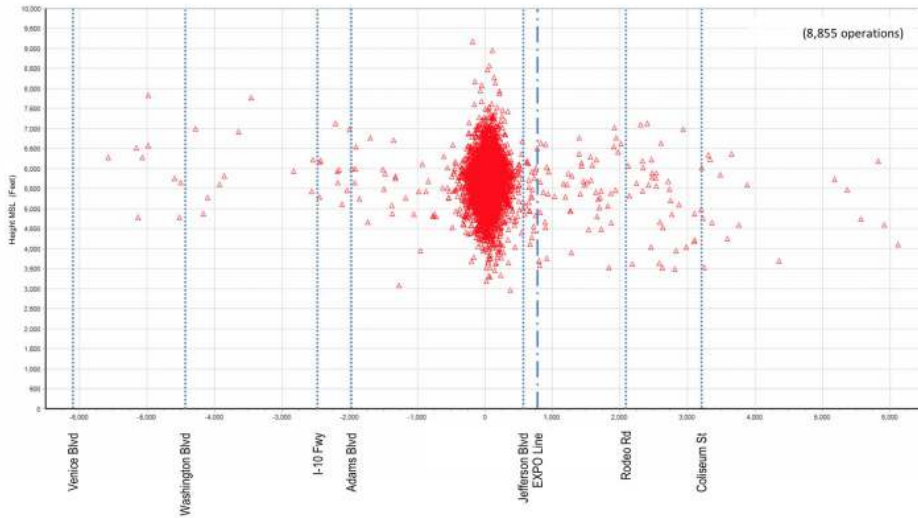
1. Data trends for DAHJR Waypoint

DAHJR Gate Penetration

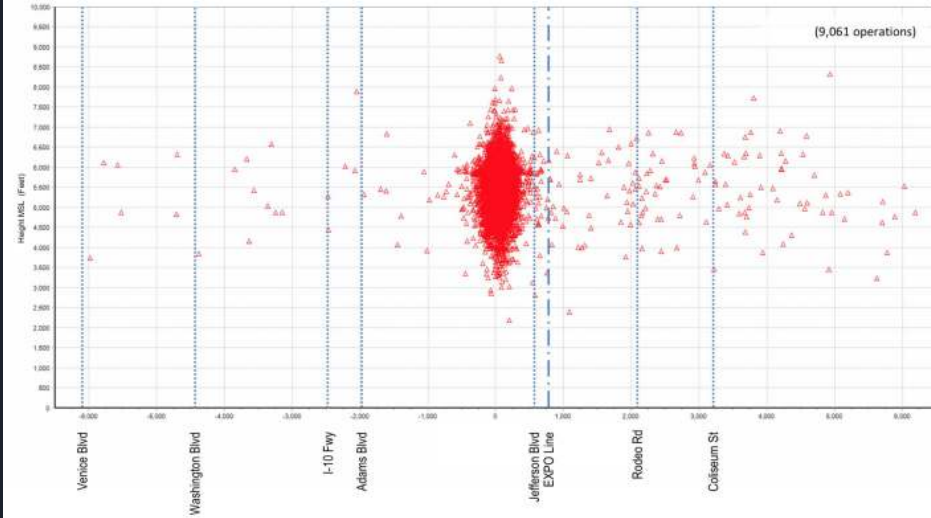
SEPT 2017				OCT 2017				NOV 2017				DEC 2017			
Altitude MSL (ft)	Count of Ops	% of Ops		Altitude MSL (ft)	Count of Ops	% of Ops		Altitude MSL (ft)	Count of Ops	% of Ops		Altitude MSL (ft)	Count of Ops	% of Ops	
>9500	0	0.0%		>9500	0	0.0%		>9500	0	0.0%		>9500	0	0.0%	
9000-9500	2	0.0%		9000-9500	0	0.0%		9000-9500	2	0.0%		9000-9500	0	0.0%	
8500-9000	1	0.0%		8500-9000	4	0.0%		8500-9000	2	0.0%		8500-9000	2	0.0%	
8000-8500	4	0.0%		8000-8500	9	0.1%		8000-8500	7	0.1%		8000-8500	5	0.1%	
7500-8000	9	0.1%		7500-8000	21	0.2%		7500-8000	13	0.1%		7500-8000	13	0.1%	
7000-7500	58	0.6%		7000-7500	79	0.8%		7000-7500	95	1.1%		7000-7500	55	0.6%	
6500-7000	250	2.7%		6500-7000	310	3.2%		6500-7000	415	4.7%		6500-7000	230	2.5%	
6000-6500	2344	25.2%	28.7%	6000-6500	2851	29.6%	34.0%	6000-6500	3029	34.2%	40.2%	6000-6500	2335	25.8%	29.1%
5500-6000	3736	40.2%		5500-6000	4092	42.5%		5500-6000	3711	41.9%		5500-6000	3628	40.0%	
5000-5500	1988	21.4%	61.5%	5000-5500	1593	16.6%	59.1%	5000-5500	1160	13.1%	55.0%	5000-5500	1806	19.9%	60.0%
4500-5000	666	7.2%		4500-5000	486	5.1%		4500-5000	304	3.4%		4500-5000	714	7.9%	
4000-4500	176	1.9%	9.1%	4000-4500	141	1.5%	6.5%	4000-4500	84	0.9%	4.4%	4000-4500	195	2.2%	10.0%
3500-4000	45	0.5%	0.7%	3500-4000	25	0.3%	0.3%	3500-4000	27	0.3%	0.4%	3500-4000	57	0.6%	0.9%
3000-3500	20	0.2%		3000-3500	7	0.1%		3000-3500	6	0.1%		3000-3500	17	0.2%	
2500-3000	3	0.0%		2500-3000	1	0.0%		2500-3000	0	0.0%		2500-3000	3	0.0%	
<2500	0	0.0%		<2500	0	0.0%		<2500	0	0.0%		<2500	1	0.0%	
Grand Total	9302	100%	71%	Grand Total	9619	100%	66%	Grand Total	8855	100%	60%	Grand Total	9061	100%	70.9%

1. Data trends for DAHJR Waypoint

Aircraft Gate Penetration Plot at “DAHJR”
(Centered near S. Redondo Blvd and Blackwelder St)
November 1-30, 2017

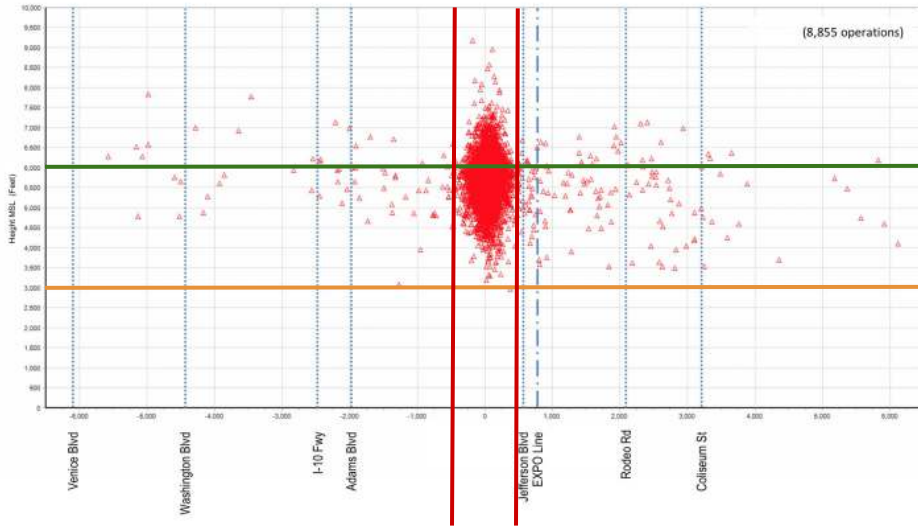


Aircraft Gate Penetration Plot at “DAHJR”
(Centered near S. Redondo Blvd and Blackwelder St)
December 1-31, 2017

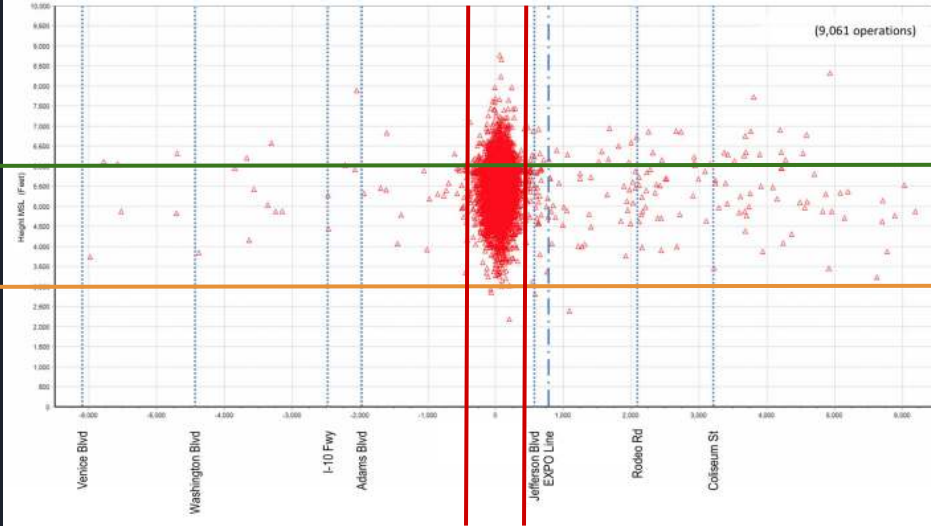


1. Data trends for DAHJR Waypoint

Aircraft Gate Penetration Plot at "DAHJR"
(Centered near S. Redondo Blvd and Blackwelder St)
November 1-30, 2017



Aircraft Gate Penetration Plot at "DAHJR"
(Centered near S. Redondo Blvd and Blackwelder St)
December 1-31, 2017



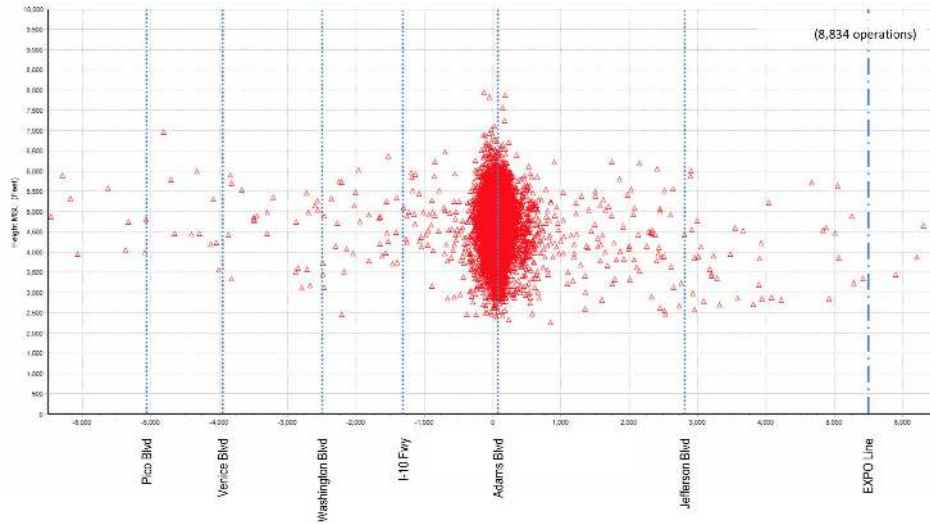
1. Data trends for GADDO Waypoint

GADDO Gate Penetration

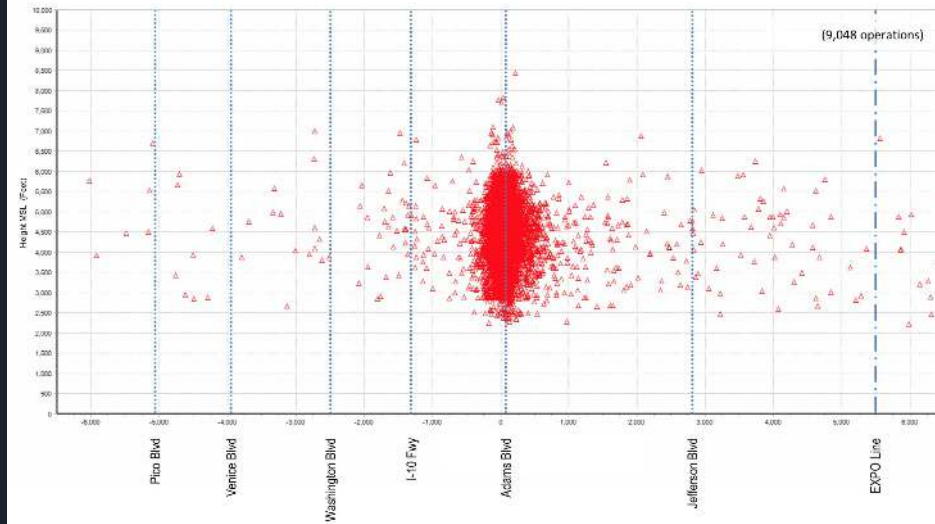
SEPT 2017			OCT 2017			NOV 2017			DEC 2017			
Altitude MSL (ft)	Count of Ops	% of Ops	Altitude MSL (ft)	Count of Ops	% of Ops	Altitude MSL (ft)	Count of Ops	% of Ops	Altitude MSL (ft)	Count of Ops	% of Ops	
>9500	0	0.0%	>9500	1	0.0%	>9500	0	0.0%	>9500	0	0.0%	
9000-9500	0	0.0%	9000-9500	0	0.0%	9000-9500	0	0.0%	9000-9500	0	0.0%	
8500-9000	0	0.0%	8500-9000	0	0.0%	8500-9000	0	0.0%	8500-9000	1	0.0%	
8000-8500	1	0.0%	8000-8500	0	0.0%	8000-8500	2	0.0%	8000-8500	0	0.0%	
7500-8000	1	0.0%	7500-8000	2	0.0%	7500-8000	2	0.0%	7500-8000	3	0.0%	
7000-7500	7	0.1%	7000-7500	15	0.2%	7000-7500	6	0.1%	7000-7500	9	0.1%	
6500-7000	20	0.2%	6500-7000	42	0.4%	6500-7000	40	0.5%	6500-7000	22	0.2%	
6000-6500	195	2.1%	6000-6500	253	2.6%	6000-6500	253	2.9%	6000-6500	148	1.6%	
5500-6000	709	7.6%	5500-6000	962	10.0%	5500-6000	1115	12.6%	5500-6000	738	8.2%	
5000-5500	2130	22.9%	5000-5500	2495	26.0%	5000-5500	2614	29.6%	5000-5500	2113	23.4%	
4500-5000	2659	28.6%	4500-5000	2773	28.9%	4500-5000	2488	28.2%	4500-5000	2495	27.6%	
4000-4500	2005	21.6%	4000-4500	1884	19.6%	4000-4500	1433	16.2%	4000-4500	1909	21.1%	
3500-4000	991	10.7%	3500-4000	746	7.8%	3500-4000	593	6.7%	3500-4000	980	10.8%	
3000-3500	444	4.8%	3000-3500	340	3.5%	3000-3500	221	2.5%	3000-3500	503	5.6%	
2500-3000	112	1.2%	2500-3000	89	0.9%	2500-3000	65	0.7%	2500-3000	116	1.3%	
<2500	11	0.1%	<2500	5	0.1%	<2500	2	0.0%	<2500	11	0.1%	
Grand Total	9285	100%	98%	9607	100%	97%	8834	100%	97%	9048	100%	98.0%

1. Data trends for GADDO Waypoint

Aircraft Gate Penetration Plot at "GADDO"
(Centered near Adams Blvd and Normandie St)
November 1-30, 2017

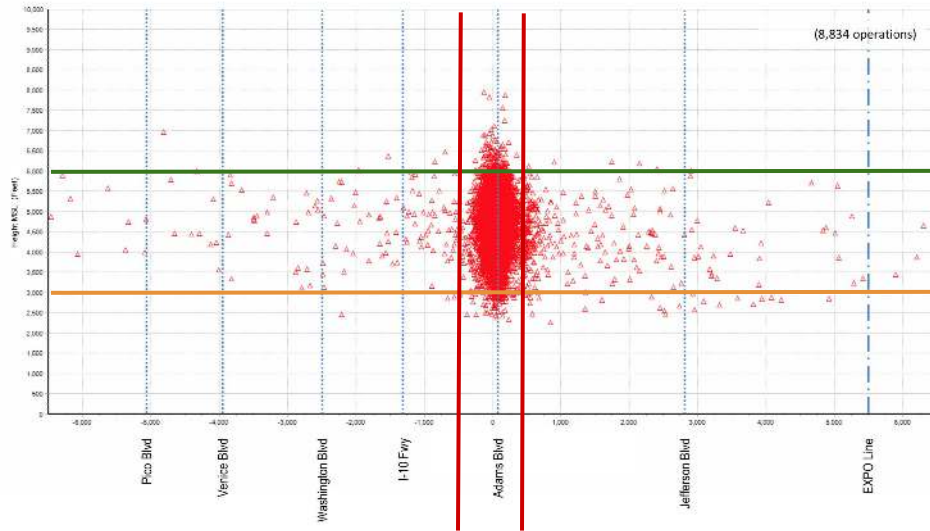


Aircraft Gate Penetration Plot at "GADDO"
(Centered near Adams Blvd and Normandie St)
December 1-31, 2017

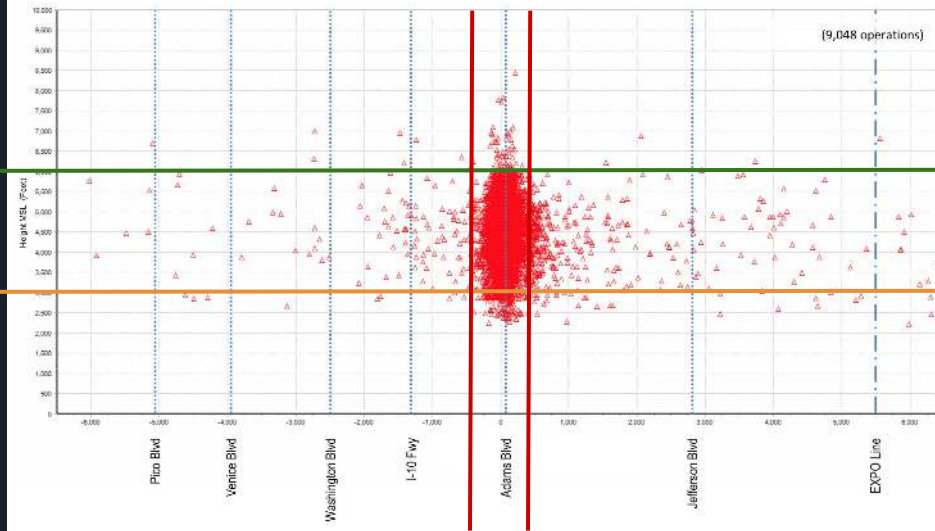


1. Data trends for GADDO Waypoint

Aircraft Gate Penetration Plot at "GADDO"
(Centered near Adams Blvd and Normandie St)
November 1-30, 2017



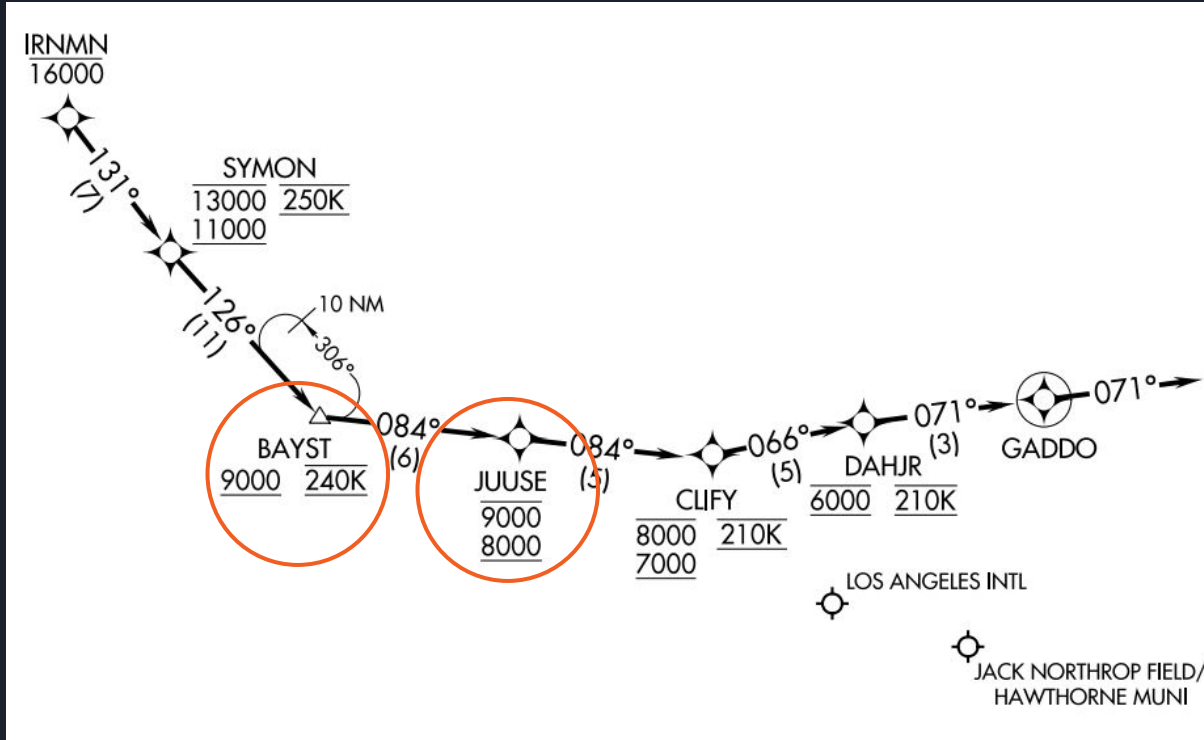
Aircraft Gate Penetration Plot at "GADDO"
(Centered near Adams Blvd and Normandie St)
December 1-31, 2017



2. New Waypoint Analysis for BAYST, JUUSE, & JETSA



2. New Waypoint Analysis for BAYST, JUUSE, & JETSA



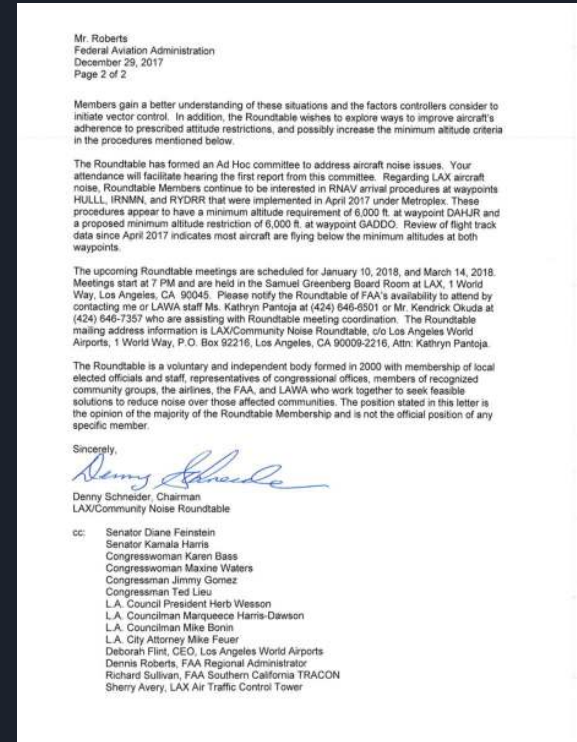
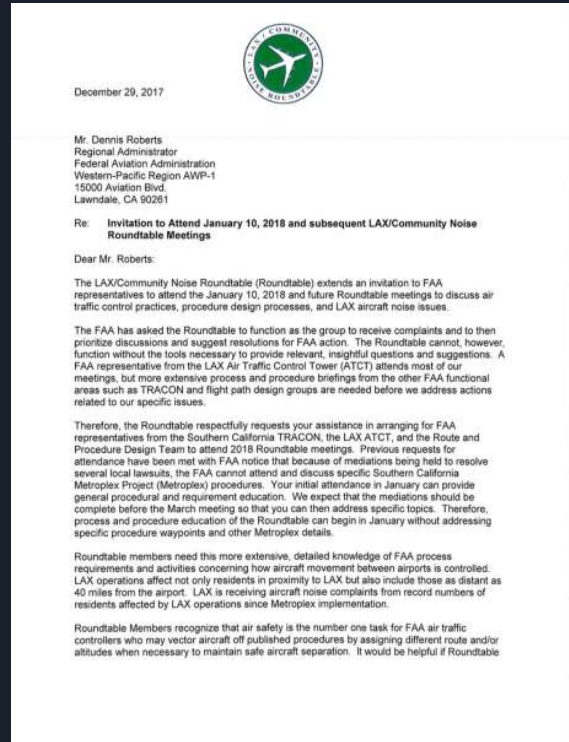
2. New Waypoint Analysis for BAYST, JUUSE, & JETSA



JETSA

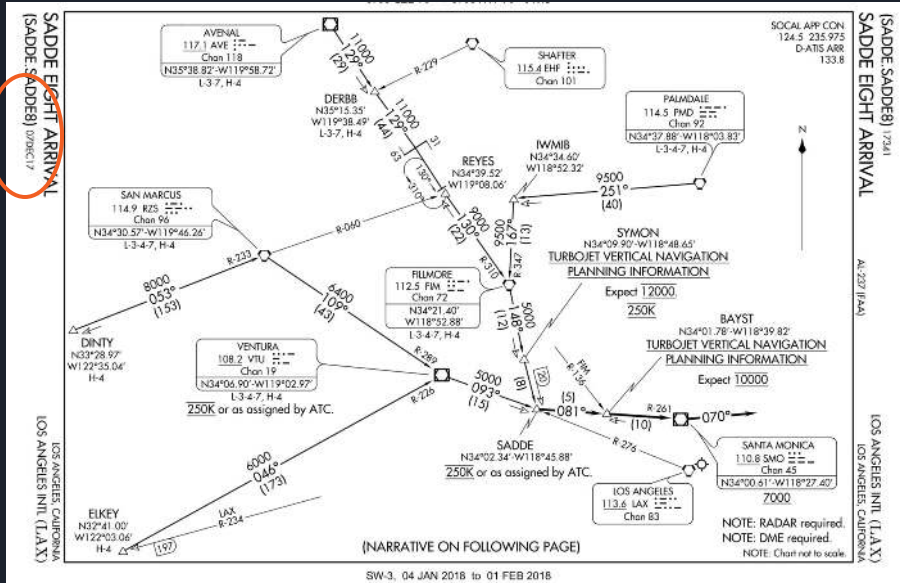
3. Actions Taken Since Last General RT Meeting

- CD11 and Congressional District (33rd District) met with Dennis Roberts
- December 29th letter from RT to Dennis Roberts



4. Change of Status for SADDE8

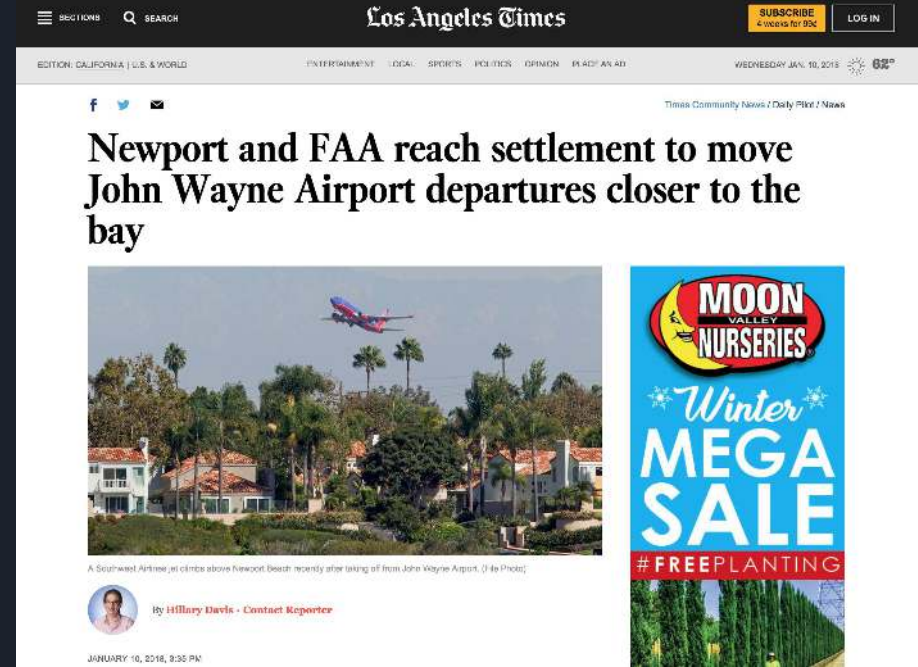
STAR SADDE EIGHT	LOS ANGELES INTL	LAX (KLAX)	LOS ANGELES, CA	NFDD17- 200	ADDED 12-20- 17
---------------------	---------------------	------------	--------------------	----------------	--------------------



- In late September of 2017 the Roundtable Publicly Commented on SADDE8 procedures posted to the FAA's IFP Gateway during the open public comment period
- No formal response was given from the FAA, other than Culver City litigation related to Metroplex prevented them from providing any detailed response
- FAA recently published the updated procedure with no response to the RT. Documents are listed as "Added 12-20-2017" with an "Effective Date" of "07 DEC 2017."
- FAA failed to respond during public comment period regarding the RT's questions

5. Elsewhere in SoCal Metroplex: Newport Beach

- "Newport Beach has reached a tentative settlement with the Federal Aviation Administration in the city's lawsuit over John Wayne Airport departure paths, the city announced Tuesday night. Flight paths will stay between the existing noise monitors on the ground and along Newport Bay, and the FAA will design and study a curved departure procedure intended to allow planes to follow the bends of Upper Newport Bay and avoid as many residential areas as possible. The new departure procedure is expected to be in place within a few weeks."



The screenshot shows the Los Angeles Times website. The main headline reads: "Newport and FAA reach settlement to move John Wayne Airport departures closer to the bay". Below the headline is a photograph of a Southwest Airlines plane flying over a residential area with palm trees. To the right of the photo is a vertical advertisement for "MOON VALLEY NURSERIES Winter MEGA SALE #FREEPLANTING". The article is by Hillary Davis, a contact reporter, and is dated January 10, 2016, at 9:20 PM.

Los Angeles Times

SECTION SEARCH

SUBSCRIBE 4 weeks for \$95 LOGIN


EDITION: CALIFORNIA | U.S. & WORLD ENTERTAINMENT LOCAL SPORTS POLITICS OPINION REAL ESTATE AD

WEDNESDAY JAN. 10, 2016 82°

Times Community News / Daily Pick / News

Facebook Twitter Email

Newport and FAA reach settlement to move John Wayne Airport departures closer to the bay



A Southwest Airlines jet climbs above Newport Beach residential areas shortly after taking off from John Wayne Airport. (Jill Photo)

By Hillary Davis - Contact Reporter

JANUARY 10, 2016, 9:20 PM